

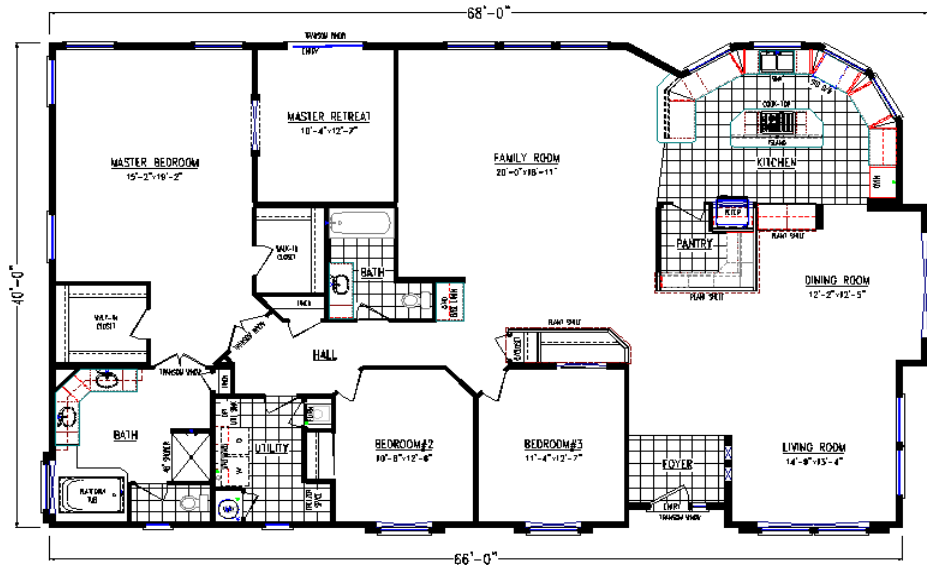


Washington Home Center Proposal

Prepared for: **Lot 3 Displays**
By: **Washington Home Center**

Model: **Champion Oregon Silvercrest Elite 7683E Offset** Sq Ft. (Approx): **2,634** Dimension: **40x68 Offset**

Bed: **3**
Bath: **2**



SILVERCREST ELITE 7683E
3 BEDROOM, 2 BATH, MASTER RETREAT, BUTLER'S PANTRY
40'-0" X 68'-0" (7683E) APPROX. 2634 SQ. FT.
ALL ROOM DIMENSIONS ARE APPROXIMATE AND SUBJECT TO CHANGE.
12/14/05

Standard Features

Garage Acceptable Architectural Design Layouts	1 Included
2 x 6, 16" On Center Exterior Wall Framing	1 Included
Full 9'6" Interior & Exterior Wall Height Deliver A Dramatic Spacious Feel	1 Included
Steel 99 1/2" Spaced High Strength Steel Foundation Ready I-beam Support System	1 Included
Transverse 16" On Center Floor Joists	1 Included
Smart-System 5/4 Eave Fascia Boards & All Wood 5/4 Window Trim	1 Included
Residential 25 Year Cemplank Hardi Exterior Both Primed & Painted	1 Included
Architectural Styled, Roofing Shingles	COLOR SELECTION NEEDED !
Exterior "Elite" Designed Combining Gables, And Lap, With Board & Batten Accents	1 Included
Dual Glazed Insulated Low-E Vinyl Windows Help Reduce Energy Costs All Year Long	1 Included
Boxed Out Windows In Selected Areas	1 Included
Numerous "High Grid" 80" Tall Windows In Main Areas Delivering Superior View	1 Included
5/8" Drywall Ceilings For Added Fire Safety, & Strength.	1 Included
9 1/2' High Flat Ceilings Throughout No Valances	1 Included
Upgrade 6# Rebond Carpet Pad	1 Included
Craftsman High Profile Baseboard Moldings In Carpeted Areas	1 Included
Orange Peel Texture Finished Walls Throughout With Rounded Corners TNT	1 Included
Recessed Can Lighting Brightens Kitchen Areas With Style	1 Included
Bedroom Overhead Ceiling Lighting With Rocker Style Switches.	1 Included
Crown Feature Ceiling Moldings In Main Living Areas	1 Included
Upgrade Interior Door & Window Molding, T/O, (White 2 1/4" Waterfall)	1 Included



Washington Home Center Proposal

Prepared for: **Lot 3 Displays**
By: **Washington Home Center**

Model: **Champion Oregon Silvercrest Elite 7683E Offset** Sq Ft. (Approx): **2,634** Bed: **3**
Dimension: **40x68 Offset** Bath: **2**

Transom Décor Glass Over Double Interior Doors In Master Suite	1	Included	
White Passage Doors Hung Securely On Three Hinge Mortised Door Jamb	1	Included	
Hollow Core Wardrobe Doors In By-pass Or Swing Style Access By Model	1	Included	
"Toe-Kick" Located Cabinet Heat Registers In Kitchen & Baths	1	Included	
Acrylic Deep Kitchen Sink	1	Included	
Deluxe Whiten "Pull-out-Spout" Kitchen Faucet	1	Included	
22 Cubic Foot Side By Side Refrigerator With Ice & Water Dispenser	1	Included	
Sturdy And Functional Oversized Drawers On Metal Rolling Glides	1	Included	
Microwave Built-In (Requires Pantry Cabinet for Location)	1	Included	
Downdraft Island Cook-top Offered In Electric Or Gas, (Some Models)	COLOR SELECTION NEEDED !	1	Included
Warranted Pex Plumbing System Is Both Healthy & Dependable	1	Included	
48" High Overhead Utility Cabinets	1	Included	
Utility Overhead Laundry Cabinet Is A Functional Addition	1	Included	
Furnace & Water Heater Neatly Concealed By Fire Protected Passage Doors	1	Included	
Bank Of Drawers Located In Both Bathrooms	1	Included	
Vitreous China Bathroom Sinks Bring That Elegant Touch To Your Home	1	Included	
Cosmetic Lights Over The Bathroom Mirrors Brighten The Room	1	Included	
Double Sink Bathroom Cabinet Finished In Raised Panel Oak	1	Included	
Master Bath With Soaking Tub In Boxed Bay Alcove	1	Included	

Color/Pattern Selections

Exterior Body Color:	Bicentennial	1	Included
Exterior Trim Color	White High-Hiding-RM	1	Included
Tape & Texture Kitchen, (Includes Tile Backsplash) TNT	Olive	1	Included
Ceramic 2" Bullnose Tile Backsplash - Kitchen	Olive	1	Included
Ceramic 2" Bullnose Tile Backsplash - Master Bath	Olive	1	Included
Ceramic 2" Bullnose Tile Backsplash - Guest Bath	Olive	1	Included
Ceramic 2" Bullnose Tile, Self Edge - Kitchen	Olive	1	Included
Ceramic 2" Bullnose Tile, Self Edge - Master Bath	Olive	1	Included
Ceramic 2" Bullnose Tile, Self Edge - Guest Bath	Olive	1	Included
Kitchen Countertop:	Citrine Topaz	1	Included
Master Bath Countertop:	Citrine Topaz	1	Included
Guest Bath Countertop:	Citrine Topaz	1	Included
Utility Room Countertop:	Citrine Topaz	1	Included
Vinyl Flooring, Entry	9175 Multi Bisque	1	Included
Vinyl Flooring, Kitchen	9175 Multi Bisque	1	Included
Vinyl Flooring, Utility	9175 Multi Bisque	1	Included
Vinyl Flooring, Guest Bath	9175 Multi Bisque	1	Included

Insulation

Per Lin/Ft Three+ Section Energy Star Insulate (requires 16" Oc Exterior Walls)	68	Included
---	----	----------

Cabinets - Bath

Warning: 36" High Master Bath Cabinets - Now Std.	1	Included
---	---	----------



Washington Home Center Proposal

Prepared for: **Lot 3 Displays**
By: **Washington Home Center**

Sq Ft. (Approx): **2,634** Bed: **3**
Model: **Champion Oregon Silvercrest Elite 7683E Offset** Dimension: **40x68 Offset** Bath: **2**

Exteriors

Frost Free Hose Bib (Each) 2 Included

Doors - Exterior

32" 15-Lite Exterior Door (Exchange w/Standard) 1 Included
36" Steel Door Exchange Blank Wall 1 Included

Windows

Transom Low-E Window, Vinyl 36x15 Stacked Above Existing (Req 9 1/2-Sidewall) 1 Included

Floor Coverings - Carpet

Keepsake Carpet 61'+ TW 34452 Marsh 1 Included

Factory Required Fees

AC Letter And Fee - Alternate Construction 1 Included

Custom Factory

Locate Transom Window Above 15 Lite Door 1 Included
8 Foot Pantry Door Is Standard 1 Included

Base Price	148,650.00
Options Total	5,394.00
Grand Total	154,044.00

