



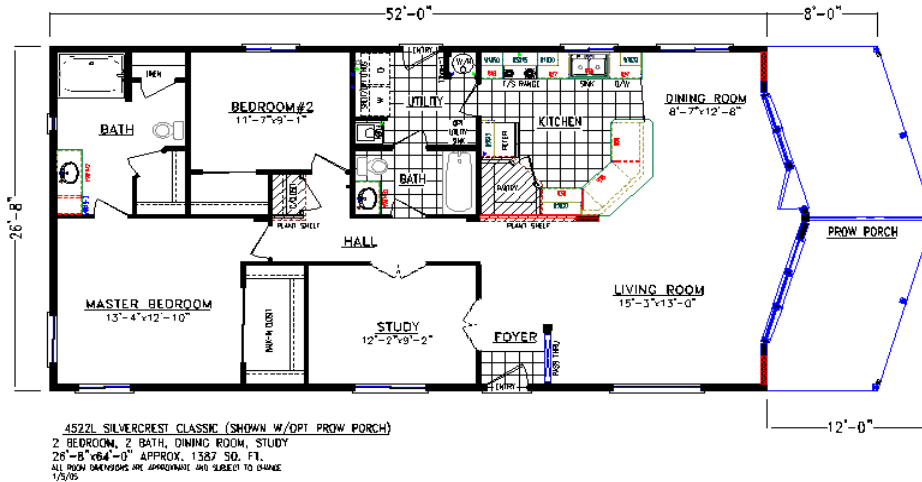
Washington Home Center Proposal

Prepared for: **Lot 2 Displays**
By: **Washington Home Center**

Model: **Champion Oregon Silvercrest Classic 4522L +
Prow Front Porch**

Sq Ft. (Approx): **1,400**
Dimension: **26-8x64**

Bed: **2/Den**
Bath: **2**



Standard Features

Shut Off Valves Under Sinks Throughout	1 Included
2 X 6 Exterior Walls 16" On Center	1 Included
2 x 6, 16" On Center Exterior Wall Framing	1 Included
2 x 6 Floor Joists @ 16" On Center	1 Included
Residential 25 Year Cemplank Hardi Exterior Both Primed & Painted	1 Included
4:12 Roof Pitch - 6" Rear Eave (DW Only)	1 Included
30# Roof Load	1 Included
HUD Thermal Zone III Insulation	1 Included
Exterior GFI Protected Electrical Outlet (1)	1 Included
Mission Style Porchlight	1 Included
Vinyl Low-E Windows Throughout	1 Included
High Volume Vaulted Ceilings Providing Spacious Rooms	1 Included
Upgrade 6# Rebond Carpet Pad	1 Included
Craftsman High Profile Baseboard Moldings In Carpeted Areas	1 Included
3 1/4" Craftsman Baseboard Molding, Throughout	1 Included
Orange Peel Texture Finished Walls Throughout With Rounded Corners TNT	1 Included
Round Corners TNT Walls Throughout, Exchange TNT Square Corners	1 Included
Luxury; Lighting Fixtures With Patina Finish	1 Included
Recessed Fluorescent Lighting - Kitchen	1 Included
Overhead Bedroom Ceiling Lights	1 Included
Upgrade Interior Door & Window Molding, T/O, (White 2 1/4" Waterfall)	1 Included
White Wire Ventilated Shelving, Throughout Home	1 Included
Flat White Mortised Doors	1 Included
Hollow Core Wardrobe Doors In By-pass Or Swing Style Access By Model	1 Included



Washington Home Center Proposal

Prepared for: **Lot 2 Displays**
By: **Washington Home Center**

Model: **Champion Oregon Silvercrest Classic 4522L + Prow Front Porch**
Sq Ft. (Approx): **1,400**
Dimension: **26-8x64**

Bed: **2/Den**
Bath: **2**

Vents Over Doors	1	Included
"Toe-Kick" Located Cabinet Heat Registers In Kitchen & Baths	1	Included
Brushed Nickel Finish on Hardware	1	Included
Kitchen Cabinet Overhead Crown Molding	1	Included
Finished Interior Cabinets - Adjustable Shelves	1	Included
Refrigerator Overhead Cabinet	1	Included
Stainless Steel Deluxe Deep Sink, Kitchen	1	Included
Kitchen Faucet, Dual Control Moen (Chrome)	1	Included
18 Cu Ft Top Freezer Refrigerator - Frost Free (Ice Maker Not Included)	1	Included
30" Range White W/Window & Timer	1	Included
Sturdy And Functional Oversized Drawers On Metal Rolling Glides	1	Included
50 Gallon Electric Water Heater	1	Included
Plumbed & Wired For Washer & Dryer	1	Included
Utility Overhead Twin Cabinets W/Rod Between, Over Washer & Dryer	1	Included
Rocker Switches	1	Included
Bank Of Drawers In Master Bath	1	Included
Towel Bar/Tissue Holder - Per Bath	1	Included
Medicine Cabinet In Wall - Most Master & Guest Baths - Some Models Exempt	1	Included
Cosmetic Lights Over Bathroom Sinks	1	Included
Vitreous China Sinks With Overflow, Both Bathroom	1	Included
Moen Dual Lever Faucet , Sink- Both Baths	1	Included
Tub, Sheer Decorator Draper, (NA Corner Tub/ Stall Showers) - Master Bath Only	1	Included
Master Bath Soaking Tub & Shower Combination	1	Included
1 Piece Tub/Shower, No Enclosure - Guest Bathroom	1	Included
60" (1) Piece Oversized Tub/Shower, Tile Tub Edge Accent - Master Bath	1	Included
Metal Mini-Blinds Throughout (Exchange Vinyl Mini-Blinds)	1	Included

Color/Pattern Selections

Prism Pointe Carpet	Sable	1	Included
Exterior Body Color:	Antique Fresco	1	Included
Exterior Trim Color	White High-Hiding-RM	1	Included
3-Tab Roof, 25 Yr (SW, DW)	Black	1	Included
Ceramic 2" Bullnose Tile Backsplash - Kitchen	Sunrise	1	Included
Ceramic 2" Bullnose Tile Backsplash - Master Bath	Sunrise	1	Included
Ceramic 2" Bullnose Tile Backsplash - Guest Bath	Sunrise	1	Included
Kitchen Countertop:	Brazilian Topaz	1	Included
Master Bath Countertop:	Villa Roca	1	Included
Guest Bath Countertop:	Villa Roca	1	Included
Vinyl Flooring, Kitchen	9192 Multi Sandstone/Taupe	1	Included
Decor/Valances in Living Room and Kitchen	Winterfrost	1	Included

Insulation

NOTE: ENERGY STAR HOMES MAY REQUIRE HEAT PUMPS-HP READY INCLUDED	1	Included
Per Lin/Ft Two Section Energy Star Insulate (requires 16" Oc Exterior Walls)	52	Included



Washington Home Center Proposal

Prepared for: **Lot 2 Displays**
By: **Washington Home Center**

Model: **Champion Oregon Silvercrest Classic 4522L +
Prow Front Porch**

Sq Ft. (Approx): **1,400**
Dimension: **26-8x64**

Bed: **2/Den**
Bath: **2**

- Floor R-38, Walls R-21, Ceiling R-40 - Energy Star	1	Included
- Low - E Windows - Energy Star	1	Included
- Special Sealants For Wall, Roof, Window, And Heating Ducts - Energy Star	1	Included
- Higher Capacity Whole House Fan - Energy Star	1	Included
- Programmable Digital Thermostat - Energy Star	1	Included
Cabinets - Kitchen		
Shaker Kitchen Cabs, Hidden Hinges, And Drawer Over Door Design	1	Included
Cabinets - Bath		
Raise Guest Bath Base Cabinet To 36"	1	Included
Shaker Bath Cabinets, Hidden Hinges, Both Baths Included	1	Included
Tubs/Shwrs/Sinks/Other		
Handicapped Elongated Toilet - High Rise	2	Included
Bathroom Faucet, Single Lever Moen on Sinks - EACH	3	Included
Bathroom Packages		
Deluxe Rectangular Bath Package, Pkg (Selected Models)	1	Included
- Rectangular, Fiberglass, Drop-In Tub (Deluxe Bath Pkg)	1	Included
- Double Sinks, (Deluxe Bath Pkg Only)	1	Included
- (1) Window (Deluxe Bath Pkg Only)	1	Included
- 48" Fiberglass Shower Stall (Deluxe Bath Pkg Only)	1	Included
Electrical		
Additional Exterior GFI Electrical Outlet	1	Included
Can Lighting Pkg - Flush Ring (4) Canlights Switched	1	Included
Exteriors		
Frost Free Hose Bib (Each)	2	Included
12" Fixed Eaves Front & Rear Door Sides, Include Gable Ends	1	Included
Vinyl Porch Rails (Replaces Standard Wood Railings)	1	Included
Exteriors - Dormers		
Large Loft Dormer W/6 Window Treatment, N/A 9 1/2 Walls or Singles	1	Included
Doors - Exterior		
Relocate Exterior Door (new Location Must Meet Egress Requirement)	1	Included
Sliding Glass Door Replacing 36" Door	1	Included
Windows - Omit Credits		
Omit Window, Must Be Larger Than 30x58	1	Included
Factory Promotions		
Silvercrest Classic Pack - Pkg	1	Included
- 22 Cu Ft Side Refrigerator w/Ice & Water (Silvercrest Classic Pack) Pkg	1	Included



Washington Home Center Proposal

Prepared for: **Lot 2 Displays**

By: **Washington Home Center**

Model: **Champion Oregon Silvercrest Classic 4522L +
Prow Front Porch**

Sq Ft. (Approx): **1,400**

Dimension: **26-8x64**

Bed: **2/Den**

Bath: **2**

- Standard Dishwasher (Silvercrest Classic Pack) Pkg		1	Included
- Space Saver Microwave Over Range (Silvercrest Classic Pack) Pkg		1	Included
- 30" Self Clean Electric Range (Silvercrest Classic Pack) Pkg		1	Included
- Raised Panel Passage Doors (Silvercrest Classic Pack) Pkg		1	Included
- Tile Backsplash Behind Range (Silvercrest Classic Pack) Pkg	Sunrise	1	Included
- Cast Acrylic Chef Sink (Silvercrest Classic Pack) Pkg		1	Included
- Moen Pull-Out Spout Deluxe White Faucet (Silvercrest Classic Pack) Pkg		1	Included
- Raised Panel Oak Cabinet Doors (Silvercrest Classic Pack) Pkg		1	Included
- Foundation Ready Frame (Trim Not Included) (Silvercrest Classic Pack) Pkg		1	Included
- 9-Lite Rear Exterior Door (Silvercrest Classic Pack) Pkg		1	Included

Custom Factory

Omit Entry Wall At Front Door		1	Included
Omit Opening To Study Fr Lr, Relocate Opening To Angled Wall		1	Included
Total Of 8 Can Lights In Kitchen And 1 Over Sink		1	Included

Base Price	77,740.00
Options Total	10,333.00
Grand Total	88,073.00